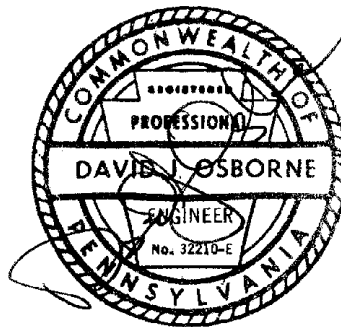




ceco associates inc.

consulting engineers

**REINSPECTION REPORT
FOR
TEXAS TOWNSHIP
BRIDGE NO. 1 ON T-405
(OLD WILLOW AVE.)
OVER
HOLBERT CREEK
WAYNE COUNTY
(BMS ID# 63-7222-0405-0005)**



"Posted"

Prepared By: Kevin J. McHugh
Field Inspection By: Kevin J. McHugh, John Syms
Field Inspection Date: December 14, 2009
Submitted By: CECO Associates, Inc.

2010-01-14 by J. McHugh

Truss:
Bearings:
Other:

103 Brgde Cap. Appraisal: 3 - 10.0-19.9%below

116 Controlling: 5 - Eng. Judg.

109 Struct Cond Appraisal: 3

Structure Condition Appraisal Based on

The following Ratings:

1A04 Superstructure Condition 4 - Poor-adv. section loss, deterioration,
1A02 Substructure Condition Rating: 3 - Serious-loss of section, deterioration,
1A03 Culvert Rating: N - Not applicable

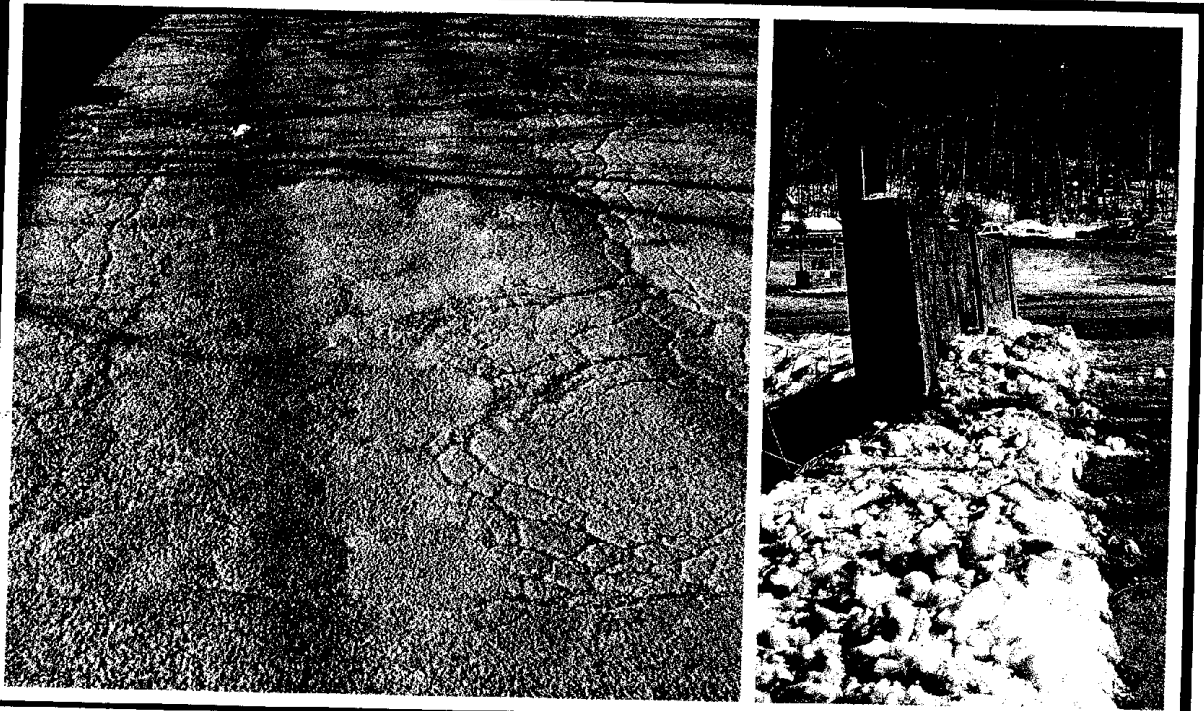
PHOTOGRAPHS OF INSPECTION SITE

Location: Texas Township Bridge #1, Wayne County

Feature Carried: TWP RTE T405 (Old Willow Avenue)

Feature Crossed: Holbert Creek Date of photographs: 12/14/09

PHOTOGRAPHS



#5 Overall view of the deck with upstream parapet leaning away from the road. Conditions for a potential collapse of the parapet.

